

London Sustainable Development Commission
Second Annual Report 2003/04



April 2004

contents

foreword by Ken Livingstone, Mayor of London	3
introduction from the Commission Co-Chairs	4
work programme 2003-04	5
A Sustainable Development Framework for London	5
Air Travel	8
Economic Development	10
Sustainable London Olympics	12
what next?	13
sources of further information	14
How to contact the Commission	14
membership	15
Commission members in 2003/04	15

© Greater London Authority April 2004

Published by

Greater London Authority

City Hall

The Queen's Walk

London SE1 2AA

www.london.gov.uk

enquiries **020 7983 4000**

minicom **020 7983 4458**

ISBN 1 85261 607 5

Cover image: © Transport for London Visual Image Service



This document is printed on recycled paper –
100 per cent de-inked post consumer waste

foreword by Ken Livingstone, Mayor of London

I established the London Sustainable Development Commission (LSDC) two years ago, pulling together enthusiastic people from a wide variety of sectors to assist London in becoming an exemplary sustainable world city. In two years the Commission has achieved a great deal, and greatly assisted me, with my statutory responsibility to include policies which promote sustainable development in all that the Greater London Authority does.

The Commission provides a rich set of perspectives to help with developing robust policies for this dynamic city. One of the most important contributions the Commission have made to promoting sustainable development in London is the development of the Sustainable Development Framework for London. This document which I launched in June 2003 provides decision makers with a list of 13 objectives that they should attempt to achieve with any strategy, policy or project that they wish to pursue. Over the last year, I am proud that the Framework has become embedded in the way several key organisations think about sustainable development. It is now the basis of the sustainable development appraisals of my strategies. The London Development Agency has been working with the Government Office for London to ensure a common approach across LDA and European funding in line with the Framework. It has been incorporated into the brief for the masterplanners for the Lower Lea Valley working towards London's Olympic Games and Paralympic Games bid. It is the foundation of the work of the London Sustainable Construction Initiative. This shows the true influence of the Commission in bringing about positive change across a wide group of organisations and issues.

The Commission have further developed the Framework through the production of a Guide, a report on indicators to measure progress and the evolution of methodologies for design and appraisal.

This Annual Report describes the work that the Commission have engaged in, not just commenting on strategies but also in constructive dialogue with organisations to effect change in thinking and values, for example with business organisations on the carbon dioxide reduction target for London. They have also provided a new and challenging perspective on air transport, an important topic for London.

The LSDC has shown a positive way to engage London-wide policy makers with the subject of sustainable development. I would like to thank all the Commissioners for the considerable time, effort and enthusiasm they have put in to their work on the Commission and its various Sub-groups. I would especially like to thank the two co-chairs, Pamela Castle and Ian Coull.



Ken Livingstone
Mayor of London



© Liane Harris

introduction from the Commission Co-Chairs



This report summarises the work of the London Sustainable Development Commission over the last year. In our first year we invested much time and effort in putting together a Framework for Sustainable Development in London.

The last year has seen the further development of the Framework, with indicators established to measure our progress and a Guide developed to help people use the Framework in decision making. The Framework was the basis of our work with the London Development Agency, to review their new Economic Development Strategy.



The Commission has become involved in London's bid to host the 2012 Olympic and Paralympic Games. London's bid has the potential for being the most sustainable Olympics ever. The masterplanners for the Lower Lea Valley have used the Framework to assess their work as they go along, and the results of their planning are impressive. This is just the beginning of a long road towards an Olympic and Paralympic Games which could bring regeneration, environmental improvement and a lasting legacy to the East of London, together with sending out London's message of diversity and respect to the world.

As part of the Commission's responsibility for promoting sustainable development, we also commissioned research into the impacts of air travel on London, to give a London perspective on the Government's White Paper The Future of Air Transport (December 2003).

How the Commission works is also important to achieving its sustainable development objectives. The Framework emphasises achieving economic, social and environmental goals at the same time and avoiding making trade-offs between them wherever possible. Similarly, the Commission in all its work attempts to reach consensus views among the Commissioners and also to work in partnership with others. We are constantly learning from others, including our fellow Commissioners. Through having a broad base of support achieved in this way, we believe that our influence is much greater and the power of our arguments is stronger.

We thank the Mayor for the opportunity to contribute to the policies for developing London. The challenge is to transform what is already a vibrant world city into one which is also sustainable - ensuring a better quality of life for everyone, now and for generations to come. The second election for Mayor of London takes place in June. We hope that the new Mayor will reappoint the Commission so that its work can continue on sustainable development at the strategic London level, to add to the good work that goes on at International, National and local levels.

Ian Coull

Pamela Castle

work programme 2003-04

A Sustainable Development Framework for London

When the Commission published its Sustainable Development Framework for London in 2003 it intended that the document should be used by key London decision-makers to form the basis of their approach to sustainable development. To the delight of the Commission, a number of agencies, including Government Office for London and the masterplanners for the Lower Lea Valley (Olympic Bid), incorporated the Framework objectives into their own work in 2003/4.

Several other agencies and public bodies in London expressed interest in the Framework in 2003/4, and the Commission is hopeful that they and others will strive to incorporate its objectives into their work over the coming year. The Commission is pleased that the Framework seems to be rapidly becoming the tool by which key London decision-makers view sustainable development.

The Commission has now developed the Framework further by producing an accompanying London guide to sustainable development, and identifying 20 headline quality of life indicators for London. Together, these documents provide a key resource to be used by all of us to learn more about sustainable development and apply sustainability principles to improve our decision-making.

Making your plans sustainable: A London Guide

The Commission has always been keen that the Framework is viewed as a useful tool for all organisations to consider their impact on sustainable development. Upon publication of the Framework, it recognised that some organisations may find it helpful if a practical Guide for individual organisations was produced. A Guide would provide the context for policy development and decision-making, assist organisations in understanding sustainable development, and help others incorporate the Framework's objectives into their work. A Guide would also help in assisting organisations understand how meeting the Framework objectives would be of benefit to them, as well as to wider society.

To this end, in Spring 2004, the Commission developed and published A London Guide. Based on the Framework objectives, the Guide aims to provide a project planning tool for individual organisations, agencies, and businesses; from the public, private, and voluntary sectors; to assist them in considering the environmental, social, and economic consequences of their plans, strategies, projects or initiatives.

The Guide is structured around the four Framework R's: Responsibility, Respect, Resources and Results. It encompasses an introduction to sustainable development and guides its reader through a series of questions to prompt them into thinking about the sustainability of their proposals. The Guide also contains a number of case studies to provide organisations with practical examples of what others have done to give them some further ideas. The Guide also provides the reader with an information resource, through a section detailing website addresses of agencies



which can assist them further with specific areas of sustainable development, in which they may require specialist expertise.

In addition to printed Guides, and PDF Guides available to download from the Greater London Authority Website www.london.gov.uk/londonissues/sustainability.jsp, the 'Question' section of the Guide is available to download in RTF (Rich Text File) format from the website. This enables those who wish to make notes electronically to do so, and also means that people can update their entries over time. The Commission is hopeful that by providing the Guide in both electronic and paper format, that this will increase its usage.

The Commission are keen that as many businesses, voluntary organisations and public agencies in London as possible are aware of this Guide and start using it as part of their project planning. They believe that this will not only increase Londoners' awareness of sustainable development, but also help us to take further steps towards becoming an exemplary sustainable world-class city.

Quality of Life Indicators

When the Mayor appointed the Commission, he wanted to develop a means of measuring quality of life in the capital - is it getting better or worse? In Spring 2003, the Commission undertook a 12-week consultation with Londoners over which indicators were most appropriate to measure the sustainability of London. The results of the consultation were analysed by Professor Yvonne Rydin at the London School of Economics, a renowned expert in the field of urban sustainability indicators.

As a result, the Commission have identified the following 20 headline indicators for London:

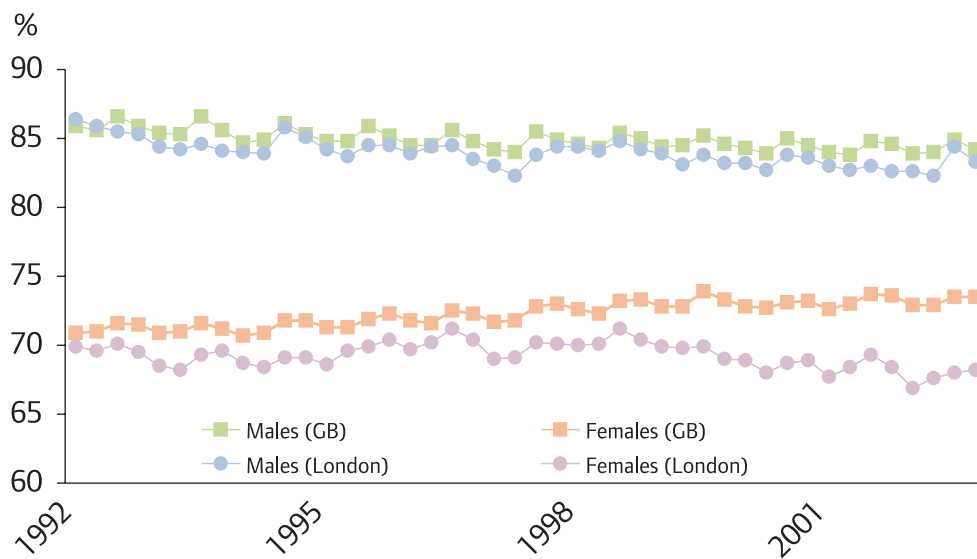
Taking responsibility	Developing respect	Managing resources	Getting results
Electoral turnout	Unemployment variation by ethnic group	London's ecological footprint	Labour force participation
Participation in volunteering	Child poverty	Bird populations	Business survival
Childcare	Street crime	Air quality: PM ₁₀ emissions	Life expectancy
Education	Neighbourhood satisfaction	Carbon efficiency of economic activity	Decent housing
Sign up to Mayor's Green Procurement Code	Travel to school	Traffic volumes	
Household recycling rates			

In addition, the Commission identified a wider menu of 55 indicators which it recommends for use by anyone wishing to measure their contribution to a sustainable London. The 2004 (First) report on London’s headline indicators, with an analysis of the baseline findings is now available on our web pages.

The results show a mixed picture for London. On the positive side, London’s primary school improvement levels are better than average and children travel to school by more sustainable modes of transport. Some key environmental indicators are improving, including PM₁₀ pollution levels and the carbon efficiency of our economy.

But some indicators show cause for concern, perhaps most notably electoral turnout, London’s ecological footprint (particularly waste), labour force participation (particularly women), business survival and levels of child poverty.

Figure 1 Economic activity rates by gender, persons working age, London compared with GB, 1992-2003



source: Quarterly Labour Force Survey 1993-2003 (Unadjusted)

There are particular concerns for Inner London, especially East London boroughs (extending south of the Thames) and for many black and minority ethnic groups. Many of these concerns relate to deprivation and social exclusion issues (e.g. low levels of GCSE attainment, unemployment, lower life expectancy) but also include other measures such as low levels of household waste recycling.

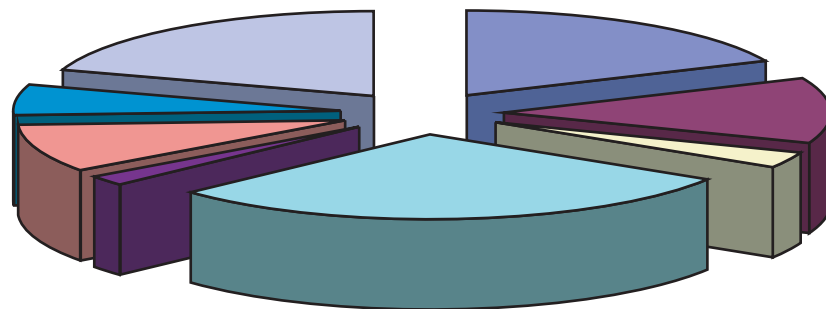
The Commission will continue to monitor the headline indicators and promote measures to improve areas where London or parts of London are at risk or under performing.

Air Travel

Last year the government consulted on air transport. The Commission sent in a brief response at that stage and also commissioned research on the impacts of air travel on London from consultants SKM. The research examined social, economic and environmental impacts, very much from a London perspective, and included a unique analysis of the Civil Aviation Authority's 2002 Passenger Survey. As the Government launched White Paper The Future of Air Transport in December 2003, the Commission set out its position.

The Commission's conclusions are reproduced below. They are explained in a short report we are publishing at the same time as this annual report. The report is based on the earlier research which contains the full detail of the analysis.

Figure 2 Passengers using London airports by reason for travel and residence, 2002

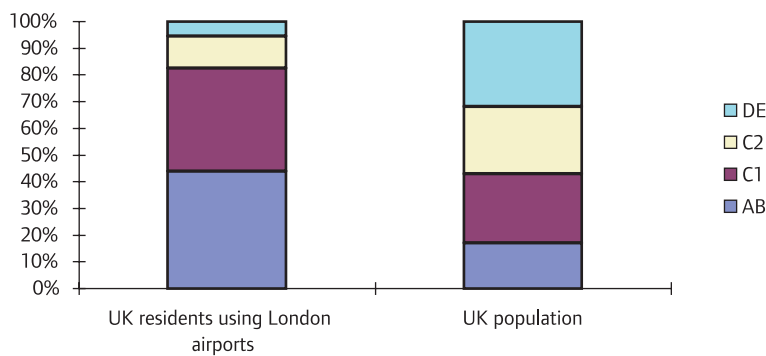


- Business travel to/from London & SE
- Leisure travel of non-UK residents to London and SE
- Business travel to/from rest of UK
- Leisure travel of residents of South East including London
- Leisure travel of non-UK residents to UK outside SE
- Leisure travel of residents of UK outside SE
- Transfer passengers: UK residents
- Transfer passengers: non-UK residents

source: CAA Passenger Survey, 2002

- The Government should improve major London - Scotland rail links
- Londoners tend to use an airport near to where they live
- Aviation is important to economic activity in London, especially tourism
- But only a third of passenger air traffic is important to economic activity (see fig 2)
- Heathrow can remain a major airport without an extra runway
- The wealthy fly a lot more than the poor and low-cost flights have not changed that (see fig 3)
- Ethnic minorities make different use of air travel and may not benefit as much as other groups from low-cost travel
- There is not enough information about differential impacts of air travel on different groups
- Aviation currently accounts for just over 3.5 per cent of total global carbon dioxide emissions, but by 2050 that could rise to 15 per cent
- Environmental degradation is suffered by different people than enjoy the benefits of flying, and it is particularly concentrated on the areas around airports
- The Government should increase taxes to ensure that air travellers pay for the full costs of their travel on others
- The Government should recast their projections of the growth in air travel
- For London's airports, flights for business and inbound tourism should be prioritized
- The case for expansion of airports in the South East has not been made.

Figure 3 Social class of UK residents using London airports, 2002



source: CAA Passenger Survey, 2002; TGI survey data



Economic Development

The LSDC and the London Development Agency (LDA) jointly commissioned a sustainable development appraisal of the revised Economic Development Strategy (EDS). This appraisal was carried out by consultants ERM, using a methodology based on the Sustainable Development Framework for London, during the period of the Assembly and Functional Bodies consultation (October/November 2003).

Over the same period, the Economic Development Sub-group met officers at the LDA to present a list of issues which we felt should be included in the revised Strategy. Three subsequent meetings were held to discuss three specific issues (the discussions have been summarised in a document available on our website):

- Local economies
- Equalities and diversity
- Sustainable construction

The consultants carried out a very detailed appraisal of the draft strategy. Their overall conclusions were:

Headline Recommendations

- 1 The **structure of the EDS** could be amended to promote improved integration of sustainability, and to strengthen the organisation and presentation of information within the document.
- 2 A key element within an amended structure would be a Vision of what London's sustainable economy should look like in 2016, setting out aspirational statements which would act as a framework for the specific objectives of the EDS.
- 3 **Action plans** in the EDS could be more closely linked to discursive/analytical text, and contain clearer targets, indicators and timescales.
- 4 The **Evidence Base** could be more closely linked to the main EDS text (ie through careful referencing), and could include data to highlight differences/inequalities within London as well as between London and other cities/regions.
- 5 The EDS could include objectives and actions for specific sectors of London's economy.
- 6 **London's wider impact**, both positive and negative, could be more carefully considered, in particular its environmental impact and London's potential to act as a global centre for environmental and social sustainability services.
- 7 **Chapter 3 on Investment in Infrastructure** could include information/actions on the value of environmental quality and the role of

environmental improvement activities in promoting regeneration. It could also address issues such as designing-out crime, the historic built environment and archaeological assets, sustainable transport (eg the provision of public transport, cycling infrastructure, good conditions for pedestrians etc, as opposed to infrastructure for private vehicles), and access to sporting, leisure and cultural facilities, as well as to good quality food.

- 8 **Chapter 4 on Investment in People** is generally successful in addressing the needs of equality target groups, but could also consider issues affecting the role of ex-offenders in the workforce.
- 9 **Chapter 5 on Investment in Knowledge and Enterprise** could set out actions on specific sectors of London's economy, including the environmental goods and services sector (currently in Chapter 3). The Chapter could also consider the role of unpaid work in the economy, and include actions to ensure the provision of information and support to non-commercial organisations (eg social enterprises, the voluntary/community sector etc).
- 10 **Chapter 6 on Marketing and Promoting London** could consider the environmental impacts of tourism and look to promote sustainable tourism activities.
- 11 **Additional stakeholders** could be brought into the consultation process, in particular stakeholders from outside London and environmental interest groups (who are under-represented in the Consultation Plan).
- 12 This **sustainability appraisal process should be iterative**, ie at some stage in the development of the EDS, a second exercise could be undertaken to consider whether these recommendations have been addressed, and to appraise the sustainability of the amended draft Strategy.
- 13 Action plans which are drawn up to implement the EDS could also be subjected to **sustainability appraisal**.

Next steps

The public consultation draft was published at the beginning of February with a consultation period until the end of April. This takes account of some of the recommendations, for example in terms of consulting stakeholders outside London regions and environmental interest groups. We hope that the final Strategy, to be published in the autumn, will be even stronger in terms of sustainable development.

Sustainable London Olympics

The announcement that London intended to bid for the 2012 Olympic and Paralympic Games presented a major challenge to the Commission. The potential to utilise the Games to regenerate a large part of East London and provide a significant legacy for Londoners was huge. But what would be the impact on resource use, London's transport system and the wider UK?



The Commission's Olympic Sub Group has maintained a close, on-going dialogue with the Lower Lea Valley (LLV) Masterplanners and the London 2012 Bid Team since the start of the process. The Commission's London Framework has been at the heart of these discussions.

In January 2004 the Commission issued a press release in support of the London Bid. Chair of the Olympic Sub Group Pamela Castle said:

"Our Framework will ensure that the Olympics consider all the aspects of sustainability - from sponsorship strategies to waste management, from carbon neutral buildings to athletes demonstrating sustainable lifestyles.

Sydney raised environmental standards and the 2004 and 2008 games in Athens and Beijing will no doubt go further, making the most of improving technologies. London must go even further. The Mayor's environmental strategies set an ambitious agenda which will make London a world leader as a green city. The 2012 Games must be equally ambitious and aspire, in particular, to the principles of 'zero carbon' and 'zero waste' if we are to continue to set the pace for others to follow. What better than the Olympic Games and Paralympic Games to promote latest technology and best practice?

The Games must bring benefits to people and London's plans to host activities in the Lea Valley offer a wonderful opportunity to tackle social exclusion and poverty, and to redress some of London's glaring east-west inequalities. New jobs, social housing, new transport infrastructure - the proposals will bring wide ranging benefits across London, not just in the Lea Valley. London's diversity will be key in delivering a people-friendly games in the true spirit of the Olympic ideal".

In February 2004, the Commission held a training session with the Bid Team seeking to integrate the London Framework into all aspects of the Bid. With the Commission's help, it is hoped that London will submit an exemplary sustainable candidate questionnaire in November 2004 which will showcase plans for a truly sustainable Games we can all be proud of and enjoy.

what next?

The Mayor appointed the Commission until May 2004. However, the Commission hopes to be able to continue in some form over the summer until the Mayor considers the appointment of a new Commission following the 2004 Mayoral Elections. The current Mayor, Ken Livingstone, has given his commitment to appoint such a body should he be successful in his re-election campaign.

This Annual Report shows that the Commission has been active on some of the most taxing issues facing London. It shows that sustainable development is multi-faceted, yet the issues affect us all - jobs, health, crime, the environment and so on. In 2003-04, we have had a considerable input into the Economic Development Strategy, air travel and planning London's bid to host the 2012 Olympic and Paralympic Games. These issues will continue to develop but new ones also emerge. Following the 2004 Elections it is likely that the Mayor's Transport Strategy will be revised. In the wake of the publication of the London Plan in early 2004, there will be a continual release of Supplementary Planning Guidance notes and Best Practice Guides over the summer and into the autumn. A London Food Strategy is on the horizon. Sustainable development binds these issues together and the Commission is the independent voice challenging policy-makers to promote quality of life for all Londoners whilst also considering our wider impacts.

The indicators show that we have some way to go before we can start to portray London as an exemplary sustainable world city. It is important that we now track these indicators over time and highlight the mechanisms and policies needed to improve quality of life for Londoners and others, now and in the future. This is the task facing the future Commission.

We are confident that the solid base we have built, in particular our London Framework, headline indicators and London Guide will be crucial tools to help us move forward.

sources of further information

'Making your plans sustainable: A London Guide', produced by the London Sustainable Development Commission, contains an extensive section giving details of where further information, advice and support can be obtained.

The Guide can be downloaded from the Commissions webpages:
www.london.gov.uk/londonissues/sustainability.jsp

The Commission's webpages also contain further information on the Commission and its 2004 Report on London's Quality of Life indicators, which is also available to download.

Paper copies of the Guide and Quality of Life Indicators can be obtained by contacting the London Sustainable Development Commission Secretariat (contact details below).

Further information on sustainable development activity in London can be found on the following websites:

London Sustainability Exchange	www.lsx.org.uk
London 21 Sustainability Network	www.london21.org

How to contact the Commission

The Greater London Authority provides the Commission Secretariat, which can be contacted at the address below:

London Sustainable Development Commission (Secretariat)
PP18, City Hall, The Queen's Walk, London SE1 2AA
Tel: 0207 983 4304
Email: niall.machin@london.gov.uk
Web: www.london.gov.uk/londonissues/sustainability.jsp

membership

Commission members in 2003/04 were:

Pamela Castle Co-Chair (Environmental Law Foundation)
Ian Coull Co-Chair (Chief Executive, Slough Estates plc)
Professor Shirley Ali Khan (Director, Sustainability First)
Victor Anderson (Greater London Authority, Mayor's Advisor on Environment and Sustainability)
June Barnes (Chief Executive, East Thames Housing Group)
Professor Nigel Bell (Imperial College, Centre for Environmental Technology)
Chris Birks (Director, Thames Region, Environment Agency)
Tom Burke (Council Member, English Nature, London)
Dinah Cox (Head of Strategy, London Voluntary Services Council)
Rachel Crossley (Director of Investor Responsibility, Insight Investment)
David Fell (Director, Brook Lyndhurst)
Paul Greenwood (Finance Director, London Development Agency)
Peter Head OBE (Corporate Development Director, FaberMaunsell)
Samantha Heath (Deputy Chair, Greater London Assembly)
Reverend Dick Johnson (Industrial Chaplain)
Cllr Sidney Kallar, (Association of London Government)
Cllr Gavin Moore (Association of London Government)
David Quarmby (Transport for London and South London Economic Development Alliance)
Sue Riddlestone (Deputy Director, BioRegional)
Penny Shepherd MBE (Chief Executive, London Sustainability Exchange)
Dr. Robin Stott (Physician)
Dr. Joanne Wade (Research Director, Association for the Conservation of Energy)
Simon Woolley (National Co-ordinator, Operation Black Vote)
Paul de Zylva (London Regional Campaigns Coordinator, Friends of the Earth)

In addition, the Commission had the following official observers:

Penny Bramwell (Government Office for London, Sustainable Development Unit).
David Goode (Greater London Authority, Head of Environment)

Our thanks to London Development Agency and the Wetland Centre (Barnes) who both hosted Commission meetings during 2003/04.



Other formats and languages

For a large print, Braille, disc, sign language video or audio-tape version of this document, please contact us at the address below:

Public Liaison Unit

Greater London Authority
City Hall
The Queen's Walk
London SE1 2AA

Telephone **020 7983 4100**
Minicom **020 7983 4458**
www.london.gov.uk

You will need to supply your name, your postal address and state the format and title of the publication you require.

If you would like a copy of this document in your language, please phone the number or contact us at the address above.

Chinese

中文

如果需要此文檔的您的母語拷貝，
請致電以下號碼或和下列地址聯係

Vietnamese

Tiếng Việt

Nếu bạn muốn bản sao của tài liệu này bằng
ngôn ngữ của bạn, hãy gọi điện theo số hoặc
liên lạc với địa chỉ dưới đây.

Greek

Αν θα θέλατε ένα αντίγραφο του
παρόντος εγγράφου στη γλώσσα
σας, παρακαλώ να τηλεφωνήσετε
στον αριθμό ή να επικοινωνήσετε
στην παρακάτω διεύθυνση.

Turkish

Bize telefon ederek ya da yukarıdaki
adrese başvurarak bu belgenin
Türkçe'sini isteyebilirsiniz.

Punjabi

ਜੇ ਤੁਹਾਨੂੰ ਇਸ ਦਸਤਾਵੇਜ਼ ਦੀ ਕਾਪੀ ਤੁਹਾਡੀ ਆਪਣੀ ਭਾਸ਼ਾ
ਵਿਚ ਚਾਹੀਦੀ ਹੈ, ਤਾਂ ਹੇਠ ਲਿਖੇ ਨੰਬਰ 'ਤੇ ਫੋਨ ਕਰੋ ਜਾਂ ਹੇਠ
ਲਿਖੇ ਪਤੇ 'ਤੇ ਰਾਬਤਾ ਕਰੋ:

Hindi

यदि आप इस दस्तावेज़ की प्रति अपनी भाषा में चाहते हैं,
तो कृपया निम्नलिखित नम्बर पर फोन करें अथवा दिये
गये पता पर सम्पर्क करें।

Bengali

আপনি যদি আপনার ভাষায় এই দলিলের প্রতিলিপি
(কপি) চান, তা হলে নীচের ফোন নম্বরে
বা ঠিকানায় অনুগ্রহ করে যোগাযোগ করুন।

Urdu

اگر آپ اس دستاویز کی نقل اپنی زبان میں چاہتے
ہیں، تو براہ کرم نیچے دیئے گئے نمبر پر فون کریں
یا دیئے گئے پتے پر رابطہ قائم کریں۔

Arabic

إذا أردت نسخة من هذه الوثيقة بلغتك، الرجاء
الاتصال برقم الهاتف أو الكتابة الى العنوان

Gujarati

જો તમને આ દસ્તાવેજની નકલ તમારી ભાષામાં
જોઈતી હોય તો, કૃપા કરી આપેલ નંબર ઉપર
ફોન કરો અથવા નીચેના સરનામે સંપર્ક સાધો.

GREATER **LONDON** AUTHORITY

City Hall
The Queen's Walk
London SE1 2AA

www.london.gov.uk
Enquiries **020 7983 4100**
Minicom **020 7983 4458**